

Offshore Drilling & Pipeline Equipment

www.ivp-solutions.com



API 7500lb Mud Gate Valves

+44 (0)167 020 2777

www.ivp-solutions.com

1

Gate Valves are designed and manufactured in accordance with the following specifications:

- API 6A** Specification for Wellhead and Christmas Tree Equipment.
- ANSI B31.3** Chemical Plant and Petroleum Refinery Piping.
- ASME VIII** Boiler and Pressure Vessel Code.
- MSS-SP-55** Quality Standard for Steel Castings for Valve, Flanges and Fittings and Other Piping Components.
- NACE MR-01-75** Sulphide Stress Cracking Resistant Metallic Materials for Oilfield Equipment.

Gate Valves are available in either rubber or metal seated designs depending upon actual service conditions. Contact IVP Solutions for further details:

TABLE 11.0A

Pressure & Temperature Ratings	
Working Pressure	7,500 PSI
Test Pressure	11,250PSI
API Temperature Rating	P (-29°C) to U (+121°C)

TABLE 11.0B

Material Requirements		
Material Class	Body, Bonnet, End and Outlet Connections	Pressure Controlling Parts E.G. Stems
AA - General Service	Carbon or Low Alloy Steel	Carbon or Low Alloy Steel
BB - General Service	Carbon or Low Alloy Steel	Stainless Steel
DD - Sour Service**	Carbon or Low Alloy Steel*	Carbon or Low Alloy Steel*
EE - Sour Service**	Carbon or Low Alloy Steel*	Stainless Steel*

**As defined in NACE MR-01-75 *In accordance with NACE MR-01-75

Please contact IVP Solutions for any special material or dimensional requirements.



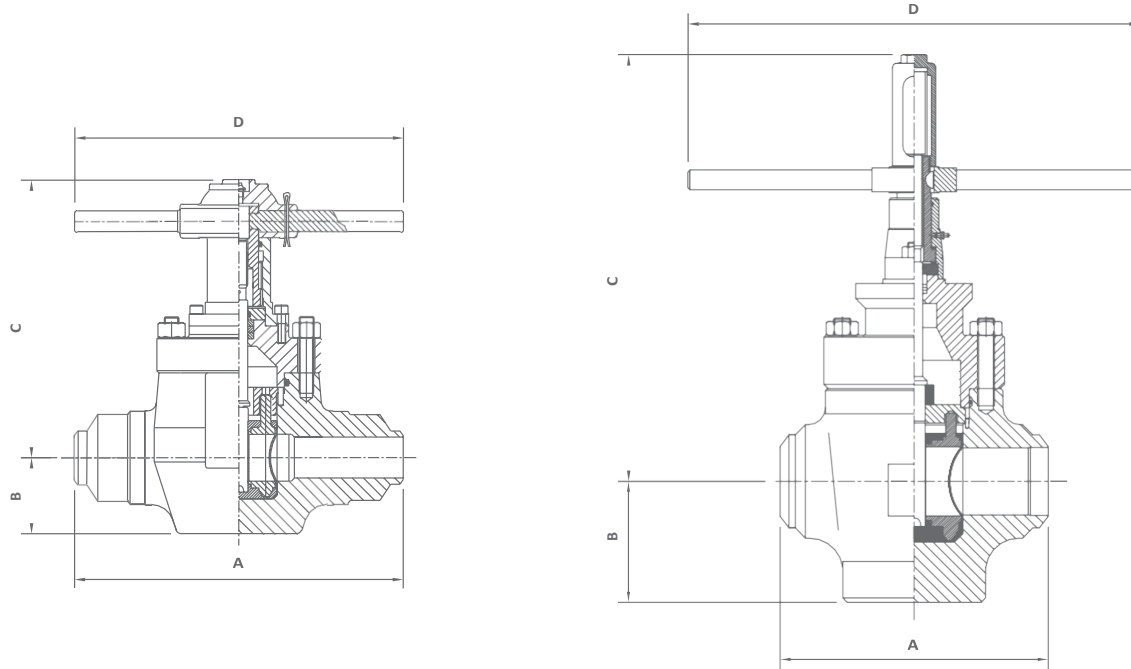


TABLE 11.1

Butt Weld 7500lb Mud Gate Valves							
Nominal Size	Pressure Rating psi	Butt Weld End Connection Size	A	B	C	D	Total Weight (kg)
			Face to Face	Centreline to Base	Centreline to Hand Wheel	Hand Wheel Diameter	
2"	7.5k	2"XXS	14.00	3.25	11.88	14	54
2"	7.5k	3"XXS	14.00	3.25	11.88	14	60
3"	7.5k	3"XXS	16.00	4.87	18.13	18	110
3"	7.5k	4"XXS	16.00	4.87	18.13	18	110
4"	7.5k	5"XXS	16.00	7.00	24.63	23	160
5"	7.5k	6.75"OD x 5" ID	17.88	5.75	30.64	26	270
5"	7.5k	6"XXS	17.88	5.75	30.64	26	270

NOTE: All dimensions in (inches).



T: +44 (0)167 020 2777 / E: sales@ivp-solutions.com / W: www.ivp-solutions.com

This data represents the standard material stocked and supplied in the IVP-Solutions product range. Other material specifications available upon request.

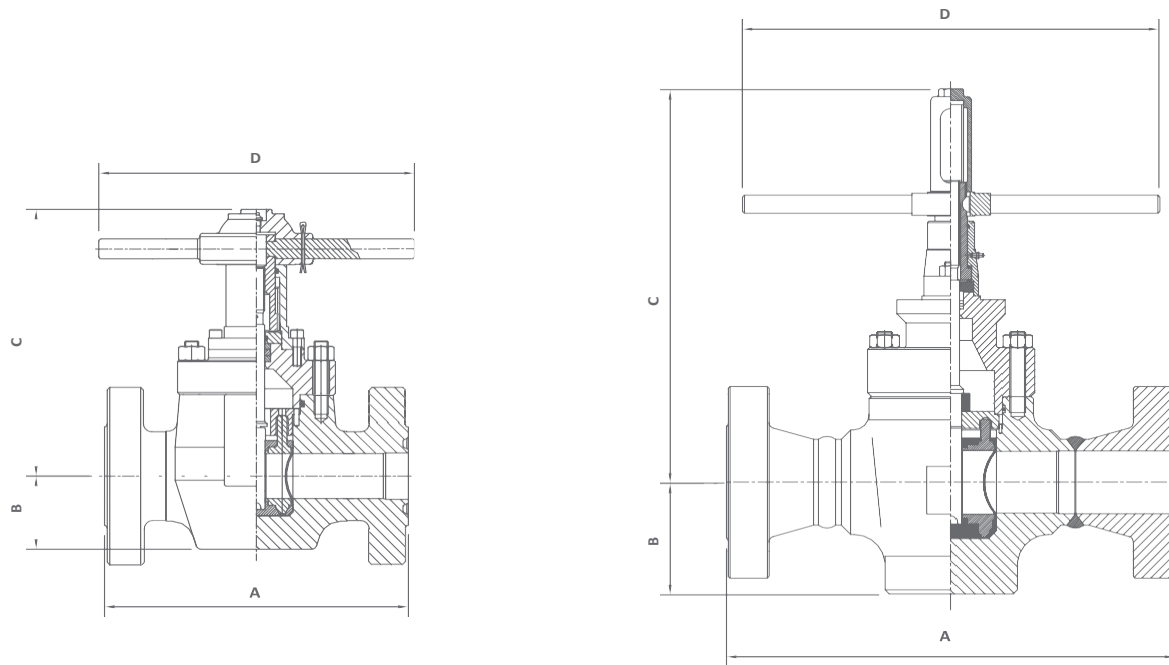


TABLE 11.2

Flanged End 7500lb Mud Gate Valves							
Nominal Size	Pressure Rating psi	Flanged End Connection Size (API 6A)	A Face to Face	B Centreline to Base	C Centreline to Hand Wheel	D Hand Wheel Diameter	Total Weight (kg)
2"	7.5k	2.1/16" 10k	13.50	3.25	11.88	14	70
2"	7.5k	2.9/16" 10k	22.25	3.25	11.88	14	80
3"	7.5k	3.1/16" 10k	27.12	4.87	18.13	18	162
4"	7.5k	4.1/16" 10k	29.12	7.00	24.63	23	250
5"	7.5k	5.1/8" 10k	29.00	5.75	30.64	26	375

NOTE: All dimensions in (inches).



T: +44 (0)167 020 2777 / E: sales@ivp-solutions.com / W: www.ivp-solutions.com

This data represents the standard material stocked and supplied in the IVP-Solutions product range. Other material specifications available upon request.

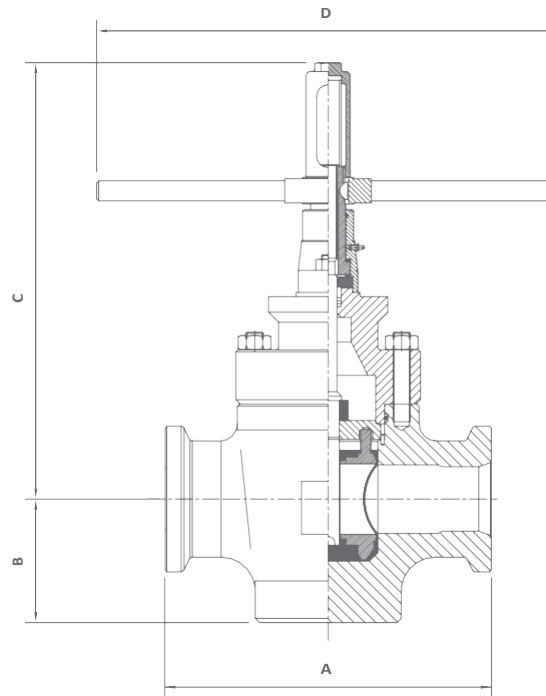
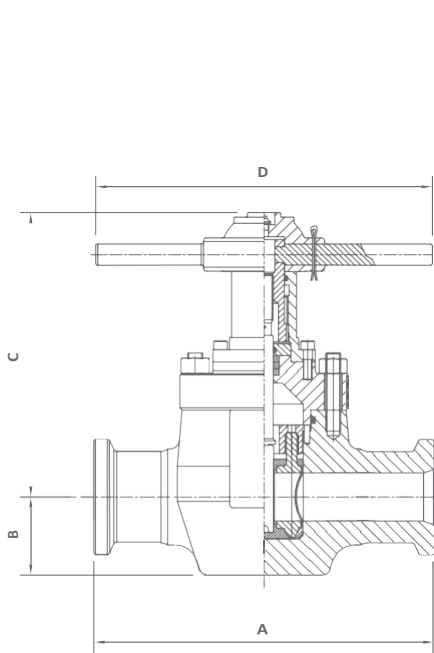


TABLE 11.3

Hub End 7500lb Mud Gate Valves							
Nominal Size	Pressure Rating psi	Hubbed	A	B	C	D	Total Weight (kg)
		End Connection Size	Face to Face	Centreline to Base	Centreline to Hand Wheel	Hand Wheel Diameter	
2"	7.5k	2in14	14.00	3.25	11.88	14	55
3"	7.5k	4in27	18.12	4.87	16.24	17	140
4"	7.5k	5in40	24.00	7.00	24.63	23	175
5"	7.5k	6in52	20.50	5.75	30.64	26	280

NOTE: All dimensions in (inches).



T: +44 (0)167 020 2777 / E: sales@ivp-solutions.com / W: www.ivp-solutions.com

This data represents the standard material stocked and supplied in the IVP-Solutions product range. Other material specifications available upon request.



T: +44 (0)167 020 2777 / E: sales@ivp-solutions.com / W: www.ivp-solutions.com

IVP Solutions, 2 GAS Workspace, Baker Road, Nelson Park West,
Cramlington, NE23 1WL